

WHAT'S INSIDE

Page 2
Guilder Cafe

Page 3
99.3% Totality as Sabin School
Sabin NET: Preparing Together
Four Million Kids Around the
world to Walk & Bike to
School

Page 4
continued ...
Guilder Cafe
Sabin Community Orchard

SCA BOARD MEMBERS

President: Vacant
1st VP: Clay Veka
Second VP: Kyann Kalin
Secretary: Rachel Lee
Treasurer: Adrienne Cohen

Land Use/Transportation

Chair: Rachel Lee
rach.c.lee@gmail.com

Communications Chair

Erin Brasell

Members-At-Large:

Claire Bollinger
Erin Brasell
Weina Dinata
David Finkelman
Lauren Gross
Paul Hustedt-Krasnove
Pam Kahl
Craig Macintyre
Henry Moreno
Shy Rohani
Don Rouzie
Gurpreet Takher
Bill Youngren
Jane Zwinger

NEWSLETTER TEAM

Editor: Henry Moreno
henry.moreno0@gmail.com

Delivery: Sandy Bacharach
(503) 287-6927
arequita@gmail.com

Newsletter circulation:
1800+ homes, businesses

Our Community in Action

Sabin Community Orchard Now Under SCA's Wing by Jeff Strang

The Sabin Community Orchard (SCOrch) was started in 2010, after two of us in the neighborhood — Rosemarie Cordello and I — and the Portland Fruit Tree Project's founder, Katie Kolker, came together in 2009. The Portland Fruit Tree Project's (PFTP) mission is aimed at increasing access to healthful food and strengthening communities by empowering neighbors to share in the harvest and care of city-grown produce. We thought the right-of-way space in Sabin between NE 18th and NE 19th where Mason Street would normally go could be more than just grass, juniper bushes, and blackberries. We secured a city grant to plant fruit trees and bushes and install signs and a path. After seven years, the trees are starting to produce a good harvest.

We welcome community members to enjoy a piece of fruit as you wander through the orchard. But when a tree has a lot of fruit, we organize volunteer harvesters, who keep half and donate half to local food banks.

Since 2012, PFTP has organized monthly community Work and Learn sessions, the third Sunday of the month, February through November, from 2-4 p.m. On July 1, however, the PFTP board announced that due to lack of funding, they are suspending all of their activities at least for the rest of this year. In a letter to the Sabin Community Association, the Executive Director, Lynn Fitch, relayed the fol-

lowing message: "The Portland Fruit Tree Project has realized that in order to truly fulfill our mission...we need to step back, reflect and reorganize.... Our Community Orchard partners and stewards will step up to maintain and harvest the bountiful orchards we helped develop during our restructur-



ing period. We are extremely grateful for the support and dedication of the Sabin Community Association over the past years."

That means it is now up to us, Sabin neighbors, to organize maintenance on our orchard. Weina Dinata has stepped up to be the main administrator, and I will organize the Work and Learn sessions.

continued on back page

2017 SCA Meeting Schedule

Board meetings are open to all and are held from 7–9 p.m. on the second Monday of the month (except in July, August, and December) at Sabin School auditorium (located on the first floor), 4013 NE 18th Ave.

Upcoming meetings:

September 11
October 9

EVENTS CALENDAR

www.facebook.com/sabinpdx
FOR SELECT INFORMATION
ON SABIN EVENTS

Albina Branch Library Events

- Tuesday, September 12
6:00 p.m. Leatherwork
- Wednesday, September 13
9:30 a.m. Toddler Storytime
- Thursday, September 14
9:30 a.m. Tiny Tots
- Friday, September 15
9:30 a.m. Book Babies
11:00 a.m. Family Storytime

Sabin Community Association



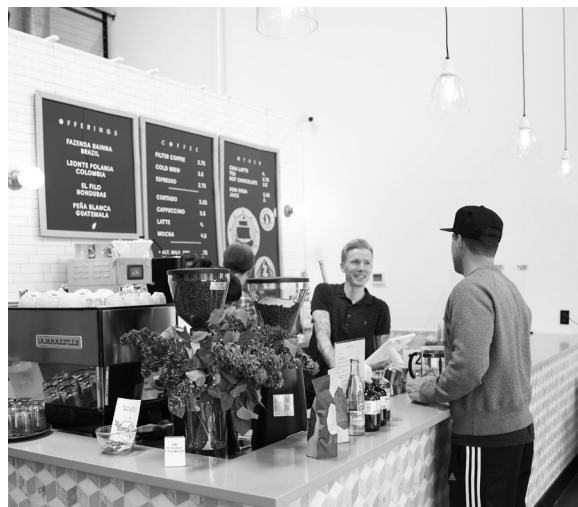
NORTHEAST COALITION
OF NEIGHBORHOODS

This newsletter is produced with the support from Northeast Coalition of Neighborhoods and Portland's Office of Neighborhood Involvement.

GUILDER Is Not Just Another Cafe

Walk into Guilder's and immediately you notice you're in more than just another Portland café. The airy, high-ceiling, light-filled space with tasteful modern décor, and a friendly greeting make for an alluring first impression. Then the menu entices. Sure there's great coffee (roasted on site) and beverages: Smith teas, Tanglewood Chai, Som drinking vinegars, along with beer, wine, cider, and cocktails.

But it may be Guilder's focused food menu that is the star attraction with its enticing and healthy dishes (and pastries and cakes!). The menu features local, seasonal produce from Portland area farms, when available, and reflects their commitment to supporting other small businesses and vendors, often former colleagues and friends.



A lifelong dream

Husband and wife, Mike and Caryn Nelson, along with business partners Toby Roberts and Carrie Lind opened Guilder earlier this year. The café showcases their own coffee brand, Junior's Roasted Coffee, and serves as their roastery. Mike and Caryn hail from Utah and Philadelphia. Mike is the coffee guy, overseeing green buying, quality-control, and their high-tech-looking roaster. Mike's worked in the specialty coffee industry for 13 years with companies in Portland, NYC, and Sweden. He studied coffee production, coffee pests and diseases during two graduate programs in Sustainability Science, Environmental Science and Geography. Caryn spent 10 years in the nonprofit field with local organizations like the Hollywood Farmer's Market and AmeriCorps. After a spell at Florida State University, they returned last spring to begin pursuing a lifelong dream of opening a café. But not just any café.

continued on back page

Jobs by Rob, llc

HANDYMAN SERVICES

Taking care of your Honey Do list

General Home Repairs/ Maintenance
Small Remodels / Restoration

website: www.jobsbyrob.com

phone # 503-789-8069

email: rob@jobsbyrob.com

CCB# 177552 Licensed, Bonded, Insured



ERIN LIVENGOOD
SABIN RESIDENT

20 YEARS OF LOCAL MARKET
EXPERTISE AT WORK FOR YOU.

Principal Real Estate Broker
503-913-0706
erinl@windermere.com
www.erinlivengood.com

Windermere
REAL ESTATE

HABITAT GARDENS
Woman Owned and Operated OLCB # 9115

Check out our seasonal garden packages on our website:
www.habitatgardenspdx.com

Neighborhood News

99.3% totality at Sabin School

On August 21, around 8:30 a.m., neighbors gathered on the green to view the much-anticipated eclipse. Many brought chairs, picnic blankets and snacks, homemade pinhole viewers, and eclipse-viewing shades to the gathering. At 10:19am they got their wish.

Excited children ran around the field taking breaks to watch the moon



Lucas and Miles keeping an eye on things

“chomp” the sun’s light, and adults used coffee cup lids as make-shift viewers and marveled at shadows transformed by the bending light. A highlight was the tent that Chad Southwell, a physicist and musician, used to build a giant camera obscura (see page 4) for viewing a large projected image of the eclipse. He “wanted to have a pinhole projection

of the eclipse that would be large enough to see clearly” and to “also demonstrate what a pinhole camera is”, further adding to the awe of the moment. Adults and kids alike enjoyed crawling inside the tent to watch the sun’s diminishing profile during the two hour event.

Preparing Together Step by Step, Block by Block

In the wake of the Hurricane Harvey, Sabin NET is very motivated to prepare our community for future disasters. As we have seen, emergency responders cannot come to save the day. Citizens need to be ready to fend for themselves and help neighbors in need. We encourage you all to discuss preparedness with your immediate neighbors. *continued on back page*



4 million kids(!) around the World to Walk + Bike to School on Oct 4

Sabin School will join in the fun, striding toward healthier bodies and a healthier environment. There will be swag for those who walk, bike, scooter, or skateboard to school. If you’re too far to walk from home, park nearby and walk the rest of the way. Lace up your walking shoes or put on that helmet and join the fun!

Sabin Orchard Work Sessions

We invite neighbors to help maintain this great community asset. Volunteers will host a fall flavors event before the September 11 SCA board meeting, 6:30-7 p.m.; and a harvesting work session on September 17, 2:00-4 p.m. We hope to see you there!

Where: Sabin Community Orchard, NE Mason between 18th and 19th. Details contact jefstrang2010@gmail.com.

HELP US DELIVER NEWSLETTERS IN NOVEMBER

We are looking for a TWO volunteers to help deliver newsletters the first weekend in November.

Each SCAN issue is produced and delivered entirely by volunteer efforts, and we need your help!

Delivering SCAN is a great way to get to know your neighborhood, meet new people, and get a little exercise.

Give Sandy Bacharach a ring at (503) 287-6927 or email her at arequita@gmail.com and she’ll let you know what’s involved. Light duty, really.



In a Hurry? Call in your order for pickup!

503-284-9455



Union Floor Company

GORDON AND HEATHER LAWES
HARDWOOD FLOOR CRAFTSMANSHIP SINCE 1922
RESTORATION | NEW INSTALLATION | REFINISHING
(503) 786-9400

WWW.UNIONFLOORCO.COM

Michael Siegel
Principal Broker

Helping You Make Good
Real Estate Decisions

Each office independently owned and operated

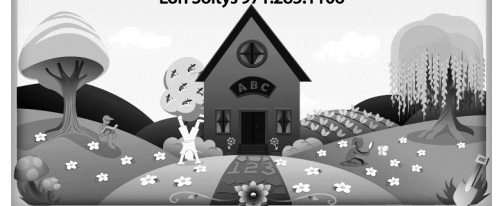
kw PORTLAND
CENTRAL
KELLERWILLIAMS.

503.544.1888

michaelsiegel@kw.com

Little Green Schoolhouse

Now Enrolling
A home-based preschool in the Sabin Neighborhood
littlegreenschoolhousepdx@gmail.com
littlegreenschoolhousepdx.com
Lori Soltys 971.285.1106



Guilder – continued

For Caryn and Mike, Guilder is also about community and giving back. They are happy to donate what they can to nonprofit organizations and projects that better the community. “Just ask and we’ll see what we can do.” says Caryn. They encourage neighbors to discover the vast world of coffee with coffee tastings (cupping), and plan to offer classes in brewing and other coffee-related topics this fall. The café is also available to groups for parties, meetings and pop-up events.

Drop in and smell the coffee, and when you mention the Sabin Newsletter you’ll enjoy a free cup of coffee with purchase of food.

Guilder seats 25 in their kid-friendly mezzanine (more downstairs), where adults can enjoy a glass of wine while kids (and adults) can savor bakery goods, porridges with fresh fruit, and other simple breakfast items. Guilder is open seven days a week from 7 a.m. to 7 p.m. and is located at 2393 NE Fremont St.

Preparing Together – continued

We have a program called Map Your Neighborhood to help you and your neighbors outline the necessary steps to take immediately following a disaster to help prevent injury and loss of property. For details, contact sabin.netpdx@gmail.com.



The Camera Obscura (or giant pinhole camera)

Community Orchard – continued

If you would like to be on the announcement list for SCOrch activities please email jeffstrang2010@gmail.com.

I would like to thank nearby neighbors for their support with this project. Stan Amy and Christy Eugenis have been providing lawn maintenance since we started in 2010 and provided water in the early years. Kristina Holm has provided water for the past few years. Honora Englander, Aren and Michelle Edlund, and other neighbors provide space in their yard debris containers.

The PFTP board also encourages public participation in the upcoming re-visioning and re-structuring. If anyone is interested in being on the planning committee or attending community meetings, please contact board chair Emily Becker at board@portlandfruit.org.

SEPTEMBER HARVEST WORK SESSION

This month’s SCOrch work session will be on **Sunday, Sept. 17, from 2-4 p.m.** where we will harvest fruit, half of which we’re planning to donate to St. Andrew Church’s food bank.

The Sabin Community Orchard is at NE Mason between 18th and 19th.

FALL HARVEST SAMPLING AT SABIN COMMUNITY BOARD MEETING

We are also hosting a 30-minute event on **Monday, Sept. 11, at 6:30 p.m.** before the Sabin Community Association meeting at Sabin School, to savor the flavors of the fall harvest. We’ll sample fruit from the trees and provide a brief orientation and learn more about the orchard’s past, present, and future.

Hope to see you there!



1465 NE PRESCOTT ST., STE. C
971-319-6945 | www.thekingsofcanna.com



Helping Sabin residents
for 23 years!

Billy Grippo
Principal Broker
(503) 497-5249
bgrippo@windermere.com
www.BillyGrippo.com

Windermere
REAL ESTATE
Windermere Stellar

When it comes to your pet’s healthcare,
we are “The Best of East and West!”



irvington
veterinary clinic

1427 NE Fremont St. 503.953.8078
irvingtonveterinary.com