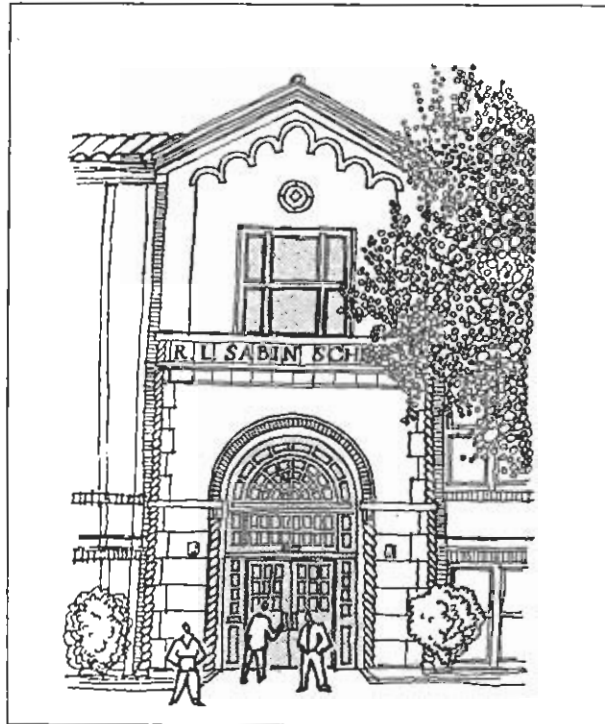


PORTLAND'S

Adopted
SABIN
NEIGHBORHOOD PLAN



October, 1993

Bureau of Planning
Portland, Oregon

ALBINA
COMMUNITY

**CITY COUNCIL'S ADOPTED
SABIN
NEIGHBORHOOD
PLAN**

October, 1993

City of Portland
Bureau of Planning
Portland, Oregon

To help ensure equal access to information, the City of Portland Bureau of Planning offers the following services to disabled citizens:

- Interpreter (two working days notice required);
- Accessible meeting places;
- Audio Loop equipped hearing rooms in City Hall and the Portland Building; and
- Planning documents printed in large type sizes for the visually-impaired (two working days notice required).

Printed on Recycled Paper

Sabin Neighborhood Plan

Sabin Neighborhood Planning Committee

Geoff Carr
Dick Hansis
George Karlson
Richard Kenward
Diane Meisenhelter
Don Rouzie
Peggy Scolnick
Duane Thomas
Betty Walker

Portland Bureau of Planning

Charlie Hales, Commissioner of Public Safety
Robert E. Stacey, Jr., AICP, Planning Director

Project Staff

Michael S. Harrison, AICP, District Planning Manager
Jean M. Hester, City Planner
Susan Gregory, Word Processing Operator

Funding for the Bureau of Planning's participation in the development of this plan was provided as a part of the Albina Community Plan project. The Albina Community Plan was made possible by the financial support of Emanuel Hospital (Health Link Systems Inc.), Pacific Power & Light, Kaiser Permanente, Portland Bureau of Community Development (Federal Community Block Grant Funds), Portland Development Commission, Portland Department of Transportation (Regional Rail Program) Portland Bureau of Environmental Services in addition to the City of Portland's General Fund.

ACKNOWLEDGMENTS

Portland City Council

Vera Katz, Mayor
Gretchen Kafoury, Commissioner
Earl Blumenauer, Commissioner
Charlie Hales, Commissioner
Mike Lindberg, Commissioner

City Of Portland Planning Commission

W. Richard Cooley, President
Stan Amy, Vice President (Resigned December 1992)
Jean DeMaster
Bruce Fong
Joan Brown-Kline
Margaret Kirkpatrick
Richard Michaelson
Vivian Parker (Resigned June 1993)
Paul Schuback (Appointed January 1993)
Doug Van Dyk

Bureau Of Planning

Charlie Hales, Commissioner-in-Charge
Robert E. Stacey, Jr., AICP, Planning Director

Project Staff

Michael S. Harrison, AICP, District Planning Manager
Colleen G. Acres, AICP, PhD., Senior Planner
Julia Gisler, City Planner
Susan Gregory, Word Processing Operator
Jean Hester, City Planner
Barbara Sack, AICP, City Planner
Paul Scarlett, City Planner

Participating and Former Staff

Pamela Alegria, Intern
Richard Bellinger, Graphic Illustrator
Joan Brown-Kline, City-Community Liaison
Sheila Frugoli, AICP, City Planner
Judy Galantha, Graphic Illustrator
Michael Hayakawa, City Planner
Tyrone Hines, Staff Assistant
Cheryl Kolander, Staff Assistant
Kimberly Moreland, City Planner
Elizabeth Murcia de Lopez, Intern
Jessica Richman, City Planner
Deborah S. Jacob, Intern
Linda Torgeson, Graphic Illustrator

Albina Community Plan Technical Advisory Committee

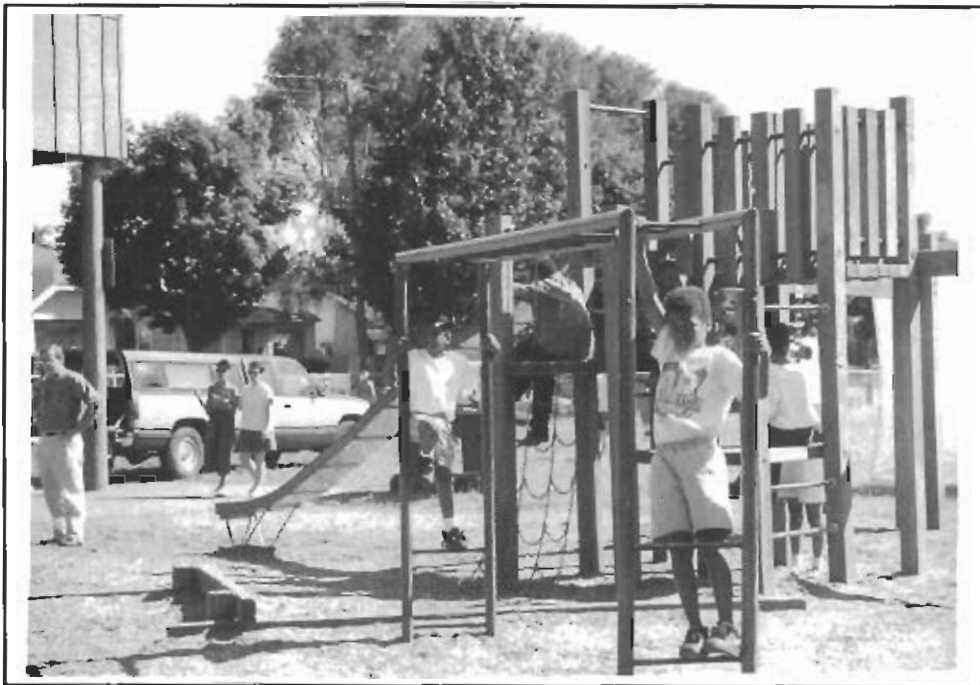
Colleen Acres, PhD., AICP, Chair, Portland Bureau of Planning
Katie Bretsch, Portland Bureau of Environmental Services
Carol-Linda Casson, Portland Development Commission
Steve Dotterrer, Portland Office of Transportation
Marcia Douglas, Portland City-School Liaison
Terry Duffy, Multnomah County
Steve Gerber, Portland, Bureau of Planning
Jeanne Harrison, Portland Bureau of Planning
Mary Holley, Housing Authority of Portland
George Hudson, Portland Bureau of Parks
Henry Markus, Metropolitan Service District
Martha McLennan, Portland Bureau of Community Development
Chief Charles Moose, Portland Bureau of Police
Ross Roberts, Tri-Met
David Sweet, Portland Bureau of Buildings
Doug Warren, Portland Bureau of Planning

Special Thanks to the Following Members of the North/Northeast Economic Development Alliance

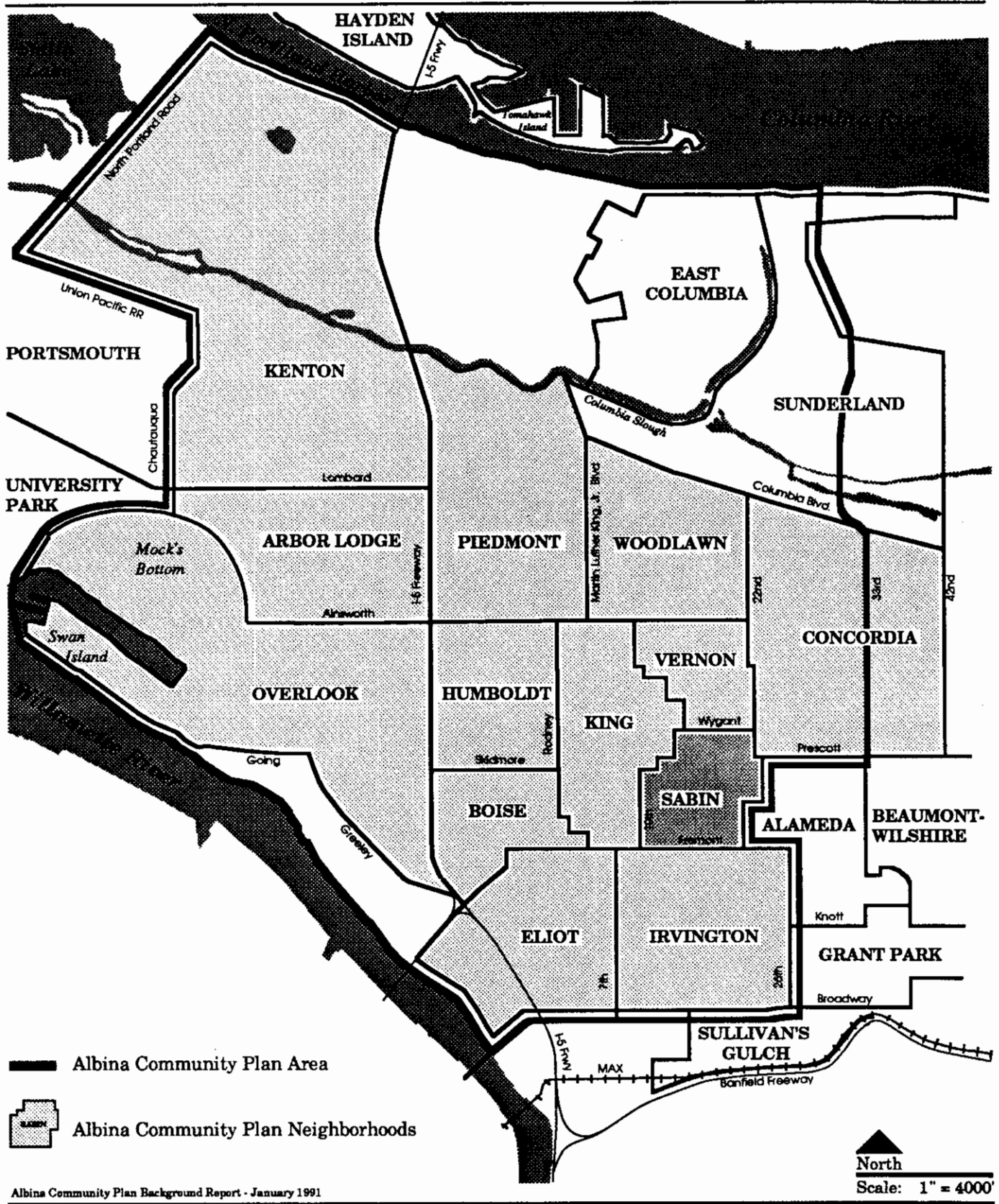
Amina Anderson
Sam Brooks
Ronnie Herndon
Sheila Holden
Matthias Kemeny
Jess McKinley
Jenny Portis
Edna Robertson
Cornetta Smith
Carl Talton
Darryl Tukufu
Jaki Walker
Jeanna Wooley

Table of Contents

Introduction	1
Sabin Neighborhood Priorities	4
Sabin Vision Statement	5
The Sabin Neighborhood	7
Policies, Objectives and Implementation Actions for Sabin	
Policy 1: Housing	10
Policy 2: Family Services	12
Policy 3: Transportation	16
Policy 4: Economic Development	18
Policy 5: Parks & Recreation	20
Policy 6: Public Safety	22
Abbreviations	24



Playground at Sabin School.



Albina Community Plan Background Report - January 1991

Sabin Neighborhood

Introduction

Purpose of This Plan

Each of the thirteen neighborhoods in the Albina Community Plan Area was offered the opportunity of participating in the district planning process by developing a neighborhood plan. The individual neighborhood plans were an integral part of the planning process of the Albina Community Plan. The neighborhood plans were intended to be community driven; to address the problems that residents of the neighborhood felt were most important.

The Sabin Neighborhood Association formed a planning committee to develop and hold a neighborhood workshop. The committee used the results of the workshop to develop the goals, objectives, and actions contained in the Sabin Neighborhood Plan. The draft plan was reviewed in July 1990 at two additional workshops. This draft of the Sabin Neighborhood Plan was reviewed by staff and by the members of the Albina Community Plan Technical Advisory Committee (TAC). The Albina Community Plan Discussion Draft and Neighborhood Plans were published in May 1991. The Sabin Neighborhood Discussion Draft was revised by a committee of the Sabin Community Association. In February 1992 the Proposed Albina Community Plan and proposed neighborhood plans were published. The Draft and Proposed plans reflected the planning staff's efforts to place goals, objectives and actions more appropriate to the Albina Community Plan at the district level. In some cases, an objective or action is reflected in both the neighborhood and the district-wide plan. This occurs where the Sabin Neighborhood has expressed a willingness to take leadership in carrying out an action that will benefit their own goals as well as the rest of the Albina Community. In some cases, specific policies, projects, programs, and regulatory provisions contained in the Sabin Neighborhood Plan are referenced in the district-wide plan as well as in the Sabin Neighborhood Plan. In many cases the Sabin Neighborhood Plan's content will be more specific than plan elements of the Albina Community Plan.

The Proposed Sabin Neighborhood Plan was submitted to the Planning Commission for their consideration in February of 1992. The Planning Commission held four public hearings on the Albina Community Plan and the associated neighborhood plans, including Sabin's. Hearings were held on March 24, March 31, April 7, and April 14, 1992. Over the following three months the Commission held fourteen working sessions where they considered the testimony and requested amendments. The Commission's consideration included inviting many who had testified at the initial four hearings back to participate in panel discussions on specific topics. The Commission reviewed the requested amendments and took tentative action on each. The Planning Commission also made a number of changes that were suggested by members of the Commission. The Commission directed that the Plan be republished as the "Planning Commission's Draft Albina Community Plan."

The Planning Commission's Draft Albina Community Plan was published in September 1992. The Commission's draft changed the Albina Community Plan in hundreds of ways. Notice was provided to all those who had participated in the Commission's hearings process. Hearings on the Commission's draft were held in the Fall of 1992. Additional working sessions were held in October and November 1992. At these hearings and working sessions the Commission reviewed public comment on their draft, including comments on proposed changes to the Sabin Neighborhood Plan. On November 24, 1992 the Planning Commission adopted the Albina Community Plan and the Sabin Neighborhood Plan as amended during their deliberations.

The Planning Commission's Recommended Sabin Neighborhood Plan was reviewed by the City Council with the Recommended Albina Community Plan and ten other neighborhood plans during the spring of 1993. Amendments to the Plan resulting from these hearings were reviewed by City Council and incorporated into the City Council's Amended Albina Community Plan. The Sabin Neighborhood Plan, the other ten neighborhood plans and the district-wide Albina Community Plan were adopted by City Council on July 28, 1993.

Relationship to the Albina Community Plan

The Sabin Neighborhood Plan is a part of the Albina Community Plan. The Albina Community Plan, and the neighborhood plans developed with it were adopted as part of Portland's Comprehensive Plan. The Albina Community Plan creates an overall framework for a nineteen square-mile study area. This framework establishes programs, policies, regulations, and identifies actions which are applicable to the entire study area or are needed to benefit the entire Albina community. Policies, projects, programs, and regulatory provisions are contained in the Sabin Neighborhood Plan which are special to Sabin. The neighborhood plan also reinforces parts of the district plan as they apply to Sabin. In many cases the Sabin Neighborhood Plan's content is more specific than plan elements of the Albina Community Plan.

The context that the Albina Community Plan establishes for the entire district ensures that the detailed provisions developed for each neighborhood are coordinated with actions planned for the rest of the district. Compatibility of the elements included in the Albina Community Plan as well as the neighborhood plans was assured by the process for the development of the Albina Community Plan. This process required that the initial version of each neighborhood plan be developed at the same time that the framework for the overall plan was being established. Review and refinement of the district and neighborhood plans continued as a single process through the development of successive drafts.

Relationship to Portland's Comprehensive Plan

The Sabin Neighborhood Plan as part of the Albina Community Plan was adopted by Portland as part of the City's Comprehensive Plan. Inclusion of the Sabin Neighborhood Plan as part of the Comprehensive Plan will make those parts of the Sabin Neighborhood Plan adopted by ordinance part of the state-wide planning system in Oregon. This status establishes goal, policy and objective statements as provisions that must be followed. If policy language conflicts with other development regulations the policy language will be the controlling provision. Status as a part of the Comprehensive Plan assures that the goals, policies, and objectives of the Sabin Neighborhood Plan will be carefully weighed as part of future consideration of land use actions within Sabin. While the policy elements of this plan are part of the Comprehensive Plan the plan also contains provisions that are not part of the Comprehensive Plan. Some aspects of the plan may be intended to guide the Sabin Community Association itself. Such provisions are Sabin's statement of how the neighborhood wishes to proceed in the future on matters that are internal to the neighborhood.

Another aspect of the plan that will not be part of the Comprehensive Plan are the action charts. The action charts consist of lists of ideas for capital projects and ongoing programs that were adopted by City Council for by resolution. These are referred to as leadership items because accomplishment of these provisions is dependent on leaders in the community. They are a starting place. Some will need to be adjusted and others will be replaced with proposals found to be more feasible. For most actions an implementation leader is listed. This listing is an expression of interest and support with the understanding that circumstances will affect the implementation leader's ability to take action.

Plan Organization

The Sabin Neighborhood Plan addresses six policy areas: Housing, Human Services, Transportation, Economic Development, Parks & Recreation, and Public Safety. Each policy area contains an overall goal statement for the Sabin Neighborhood for that policy area, a set of objectives to address the concerns of Sabin residents, and a list of actions which propose how to meet the neighborhood's goals and objectives. Action items are divided into projects, programs, and regulations. Each action item is followed by a proposed implementor and timeframe for completion or implementation. A key to the abbreviations for the implementors can be found at the end of the plan.



Children's Activities at Sabin Multicultural Festival.

Sabin Neighborhood Priorities

In December 1990, the Sabin Community Association held a review of their draft plan. Three priority items emerged from these on-going discussions within the Sabin Community: 1) Housing; 2) Economic Development; and 3) Public Safety. A planning and implementation strategy statement for each of these three priorities was developed.

Housing

Develop a comprehensive housing plan for the Sabin Neighborhood which will address the following concepts and issues:

- A. Habitability, with emphasis on maintaining the current character of the neighborhood with zoning policies which encourage single-family affordable, quality housing.
- B. Rehabilitation, including increased emphasis on resolving the vacant/abandoned housing issue and the issue of property abandonment or neglect by "problem" landlords.
- C. Development, including a design and site review process, and the encouragement of alternative housing finance and ownership for low and middle income households. This may include, but not be limited to, land trusts.

Economic Development

Encourage new business development with an emphasis on minority-owned businesses by marketing Sabin Neighborhood in terms of its ease of access, low cost real estate, sense of community and quality education. Emphasis should be placed on full utilization of community resources to create job opportunities and job support services via the Northeast Workforce Center.

Community Safety

- A. Develop programs and services with an emphasis on youth designed to provide a social foundation based on mentorship, integration, and choice which celebrates the ethnic and generational diversity of Sabin Neighborhood. Such programs are viewed as a positive alternative to the 'street' and gang-related environment. Coordination and implementation of these programs would be through community centers.
- B. Increase the current and future safety of Sabin Neighborhood by supporting community policing and by obtaining funding for crime prevention activities such as mobile block watches, site hardening, street lighting, and public safety awareness education.

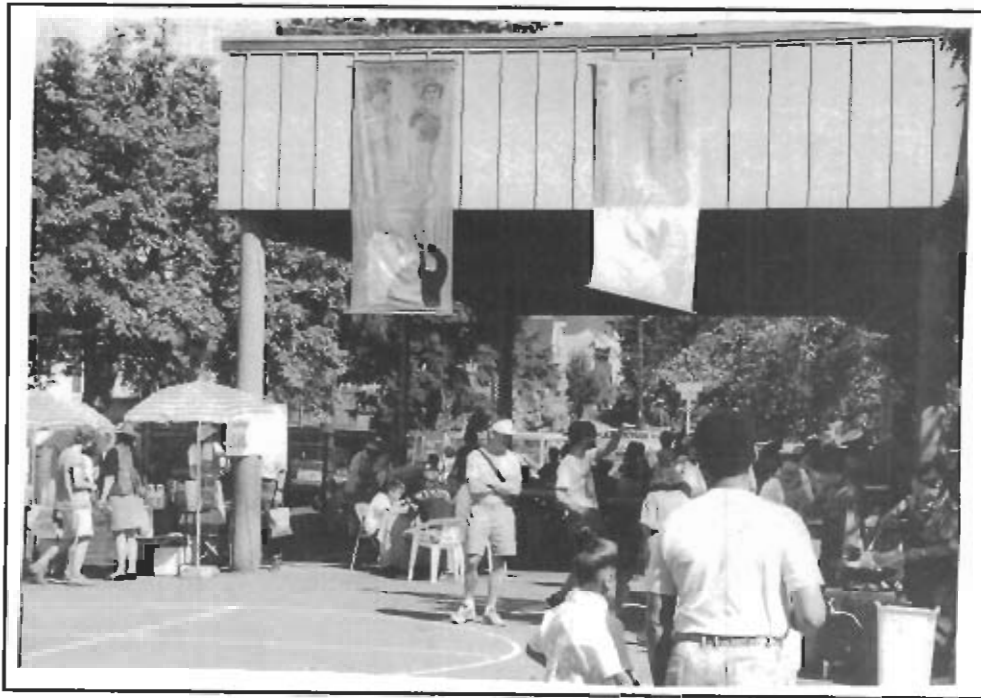
Sabin Vision Statement

The future of the Sabin Neighborhood should be in the hands of its residents. As members of the Sabin community, we reached out to our neighbors to develop this neighborhood plan to ensure that Sabin's voice is clearly heard as a part of the Albina Community Plan. In order to implement our vision for Sabin, we will work together with other North-Northeast neighborhoods, the City of Portland, and other appropriate agencies.

In order for us to be in control of our future, we needed to develop a vision for our neighborhood. We needed to crystalize and reinforce our sense of community and our commitment to the actions necessary to turn our vision into reality. The Sabin Neighborhood Plan is the document that sets out the goals, objectives, and actions the community has developed to implement our vision.

Through a community-wide effort we met, discussed assets and problems within the community and formulated solutions. The consensus of those participating in the planning effort reflects a strong commitment to increasing the livability of Sabin while maintaining its ethnic, cultural and socio-economic diversity.

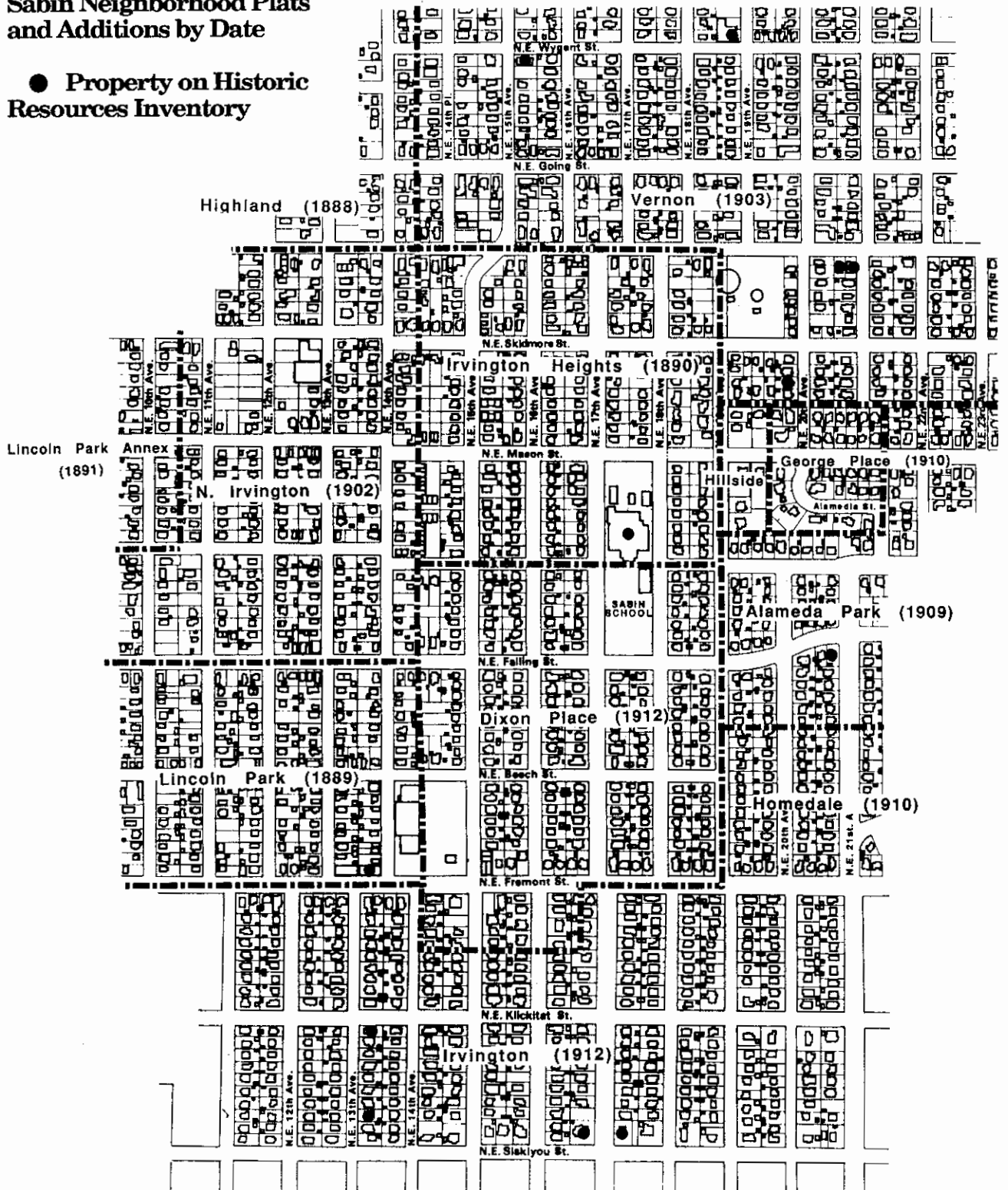
What kind of place will the future Sabin be? A quality, stable residential neighborhood that nurtures the growth of its children through the high quality of its schools and recreation facilities. A neighborhood that recognizes the value of its historic and cultural resources and has preserved them. It is an active participant in an economy that creates and sustains jobs and enhances livability; a neighborhood that will strive to build a spirit of caring and pride in the community.



The Annual Sabin Multicultural Festival reflects the neighborhood's commitment to a diverse community.

Sabin Neighborhood Plats and Additions by Date

● Property on Historic Resources Inventory



PORTLAND BUREAU OF PLANNING

UPDATED:
Aerial 9-21-89
Field 9-89

The Sabin Neighborhood

Sabin is in an ideal location, close to downtown Portland, large shopping centers, major businesses, schools, libraries, hospitals, freeways and is served by two bus lines. Sabin is dominated by single family homes with two neighborhood commercial areas: 15th and Fremont and 15th and Prescott.

Development of the Sabin Neighborhood

The donation land claim that became the Sabin neighborhood was established in 1853 by Alvin Allard. On March 28, 1860, Allard mortgaged his entire quarter section (160 acres) for \$430 to William Irving to be repaid in one year at 24% interest. On January 31, 1865, Allard gave Irving a warranty deed to the whole quarter section, the value shown being \$600. On December 20, 1870, Irving sold the entire tract to George W. Shaver for \$1,000. The first platting of the area for house lots did not occur until 1888 when the Highland plat was established. The Highland plat was followed by Lincoln Park (1889), Irvington Heights (1890), and Lincoln Park Annex (1891). The greatest activity in housing construction did not occur until after 1900. Eighty-five percent of the houses now standing in Sabin were built between 1900 and 1939.

By the 1890s several residential communities in North and Northeast Portland were developing rapidly. Streetcar suburbs such as Irvington and Piedmont were popular places to live for the expanding middle class. Sabin's development pattern is characterized by smaller houses and a mix of working class, white collar and ethnic communities. One of the most distinctive of these groups is the German-Russians. This tightly knit community emigrated from Germany to Russia in the 1790s when Catherine the Great was recruiting people from all over Europe to Russia. One hundred years later the group of Germans again emigrated to Canada and the United States from Russia leaving for the same reason they had left Germany, to avoid oppressive conscription policies. Many of these German people were craftsmen and artisans who were forced into farming in Russia, another motivation for emigration.

In the Sabin community, the German-Russians lived from NE 10th to NE 15th and from NE Fremont to NE Prescott. Many German/Russians worked at the Albina railroad yards and would walk to work through the areas with predominantly Scandinavian, Polish and Irish populations. The tension between these groups sometimes erupted into street fights.

The African-American community is a strong and vital presence in Sabin today. Kaiser's Vanport housing development brought a dramatic increase in black population in the 1940s. The destruction by neglect and flood of Vanport and the segregationist policies of the Real Estate Board of Portland led to a black community forming in the close in area of North and Northeast Portland. The construction of the Memorial Coliseum and the Emanuel Hospital Urban Renewal Project eliminated much of the housing in this area and brought about the decline of the African-American business community in the Williams/Vancouver corridor. During this same period, beginning in the late 1950s, fair housing laws were passed and there was a general improvement in economic conditions for African-Americans. Sabin was one of the neighborhoods where blacks found affordable single-family housing as had other ethnic and working class communities before them.

Sabin School

The doors of Dixon Place (Sabin) School first opened as a portable school in 1919. Dixon Place was an elementary school with grades 1 through 8. In 1920, Dixon Place was renamed Sabin in honor of R.L. Sabin, a prominent Portland School Board member. It remained a portable elementary school until the present structure was completed in 1928. In 1941 Sabin School was renamed Boy's Edison High School, a six year high school for boys considered "disruptive." In 1947, Boy's Edison was discontinued and became Sabin Elementary School again.

In the 1960s Sabin became a "Model School" and received a share of the available federal title monies designated to upgrade schools with large numbers of under-privileged or disadvantaged youth. Sabin was one of nine schools in the Model Cities area together with King, Irvington, Eliot, Humboldt, Woodlawn, Vernon, and Boise. In approximately 1970, Sabin's Extended Day Child Care Program was organized. The program was established to provide daycare for working or one-parent families. Teachers were paid additional money to teach after-school classes to the students.

In the Fall of 1972, Sabin began its community school program, which became a center for after school and evening programs. The community school program began working towards building a sense of community. The Community Extended Day Program remains in operation but the community school was cut in 1977 due to general budget cutbacks and the loss of the CETA program. Sabin Grade School became an Early Childhood Education Center in 1976 with students from Pre-Kindergarten to Grade 5. Sabin has remained an Early Childhood Education Center and has earned a reputation as one of the most successful schools in Albina.

Sabin Community Association

The Sabin Community Association was formed in 1969 to participate in the Model Cities programs. Elections were held for two Sabin representatives to the Model Cities Planning Board. Residency within the particular school boundary was a requirement for voting privileges and election to the Model Cities Planning Board. In 1969, Sabin School boundaries were adopted as the Sabin Community Association boundaries when the first Sabin by-laws were adopted. These are the same boundaries recognized by the City of Portland Office of Neighborhood Associations in 1992. These boundaries are:

Commencing on NE Siskiyou at NE 10th Avenue, and continuing on NE Siskiyou at that point in an easterly direction to NE 21st Avenue;
NE 21st Avenue northerly to NE Alameda Avenue;
NE Alameda Avenue easterly to NE 23rd Avenue;
NE 23rd Avenue northerly to NE Prescott Street;
NE Prescott Street westerly to NE 22nd Avenue;
NE 22nd Avenue northerly to NE Wygant Street;
NE Wygant Street westerly to NE 14th Avenue;
NE Prescott Street westerly to NE 12th Avenue;
NE 12th Avenue southerly to NE Skidmore Street;
NE Skidmore Street westerly to NE 10th Avenue;
NE 10th Avenue southerly to NE Siskiyou Street, at the point of the beginning.

Sabin Community Association (SCA) is the neighborhood association representing the Sabin community. The city officially recognizes and seeks input from the SCA on a variety of issues. In turn, the Sabin Community Association attempts to involve and inform Sabin residents on local and city-wide issues and neighborhood improvement projects.

One of the most important reasons for forming a neighborhood association at that time was to participate in the Neighborhood Development Program in order to qualify for federal grants to upgrade the condition of housing and the general livability of the neighborhood. Sabin started organizational meetings in 1969 and adopted by-laws and elected officers in 1970. As a Model Cities neighborhood, Sabin participated with the King and Vernon neighborhoods in developing a plan that addressed land use issues and established policies for housing, transportation, and community development projects.

Over the years, SCA has participated in a wide variety of neighborhood programs including annual neighborhood clean-ups, the community schools programs, acquisition and retention of the Albina Branch library, block watch programs and crime prevention workshops, zoning and traffic concerns, community arts programs, neighborhood tree planting, the Irving Park Reading Tree summer programs, the acquisition of a small park at the water tower, and low income weatherization. Recently, the Sabin Community Association has held a successful multi-cultural festival on the grounds of Sabin School and established a strong walking patrol in the neighborhood. Sabin is also a focus for groups developing innovative and affordable housing alternatives such as co-housing, land trusts and community development corporations. In the development of the Sabin Neighborhood Plan, the SCA has set itself an ambitious agenda for the next twenty years. Their efforts will continue to shape a community strong in its diversity, a quality, safe environment for its residents.



Albina Branch of the Multnomah County Library.

Policy 1: Housing

Foster the preservation and development of affordable, quality housing that is compatible with the existing single-family character and socio-economic diversity of the Sabin Neighborhood. Enhance a sense of pride and commitment to the community.

Objectives:

1. Provide low to moderate income housing in the Sabin Neighborhood.
2. Rehabilitate viable vacant housing rather than demolishing it.
3. Provide traditional and non-traditional financing for rehabilitation and ownership of housing. Identify public and private resources to preserve long-term affordable housing.
4. Encourage pride and responsible ownership for owner-occupants and investor-owned housing in the Sabin Neighborhood.
5. Provide rental housing as a viable option for those who choose to be residents of Sabin. Create a welcoming atmosphere for renters in the community.
6. Allow housing densities compatible with Sabin's existing community character. Establish development standards that reflect this character.
7. Encourage innovative housing that enhances Sabin's sense of community by providing social support networks and/or service-enriched housing.



ACTION CHART: Housing

#	Actions	Timeline				Implementors /Advocates
		Adopted With Plan	On- Going	Next 5 Yrs	6 to 20 Yrs	
PROJECTS						
H1	Update the Historic Resources Inventory to include additional sites in Sabin. Explore the possibility of a historic design district west of NE 15th.			X		SCA, BOP
H2	Encourage the planting of at least one street tree per lot frontage. Seek grants to accomplish this.		X			FOT, SCA
H3	Create an SCA committee to monitor development within Sabin and work to develop design criteria for new development and rehabilitation.			X		SCA, BOP, AIA
PROGRAMS						
H4	Encourage existing and new local non-profit housing and land trust organizations to work in Sabin.		X			SCA, NECDC, SLT, SCDC
H5	Identify and report violations to the garbage pick-up and yard maintenance regulations.		X			SCA, BOB
H6	Provide education to landlords and tenants on landlord/tenant laws and Portland's drug house ordinance. Encourage landlord-tenant screening programs. Facilitate connecting responsible tenants and responsive landlords.		X			PPB, SCA
H7	Increase and improve the information available on housing programs such as rehabilitation, financing options, weatherization and tax deferral using the media.		X			PDC, BCD, SCA
H8	Seek funding for programs and technical assistance on weatherization, solar energy, energy fitness and rehabilitation		X			SCA, CEP, Eliot Energy House
H9	Consider the creation of a neighborhood revolving loan fund to help rehabilitate housing and ensure long term development of affordable housing.			X		SCA
REGULATIONS						
H 10	Adopt development standards that reinforce the residential character of Sabin.		X			BOP
H 11	Notify SCA of proposed building demolitions so that the neighborhood can take action if necessary.			X		BOB, SCA

Note: Action Charts were approved by Portland City Council by resolution. They are a starting place. Actions with an identified implementor were adopted with the understanding that some will need to be adjusted and others replaced with more feasible proposals. Identification of an implementor for an action is an expression of interest and support with the understanding that circumstances will affect the implementation leader's ability to take action. Actions with a listed advocate rather than an implementor are included in recognition of the importance of continued discussion of these issues. Such actions will become part of this plan only when an implementor has agreed to support them.

Policy 2: Human Services

Provide human services and educational and recreational opportunities that help residents meet their basic physical, social and spiritual needs. Ensure that the resources and opportunities needed to raise children in a safe, nurturing environment are available to Sabin residents.

Objectives:

1. Expand opportunities to gain knowledge of and access to essential services in the community.
2. Foster communication between the diverse groups in the Sabin community.
3. Ensure that health and social services are available to Sabin residents.
4. Encourage and reward Sabin residents, especially youth, for involvement in the community.



Children at the Entrance to Sabin School.

ACTION CHART: Human Services

#	Actions	Timeline				Implementors <i>/Advocates</i>
		Adopted With Plan	On- Going	Next 5 Yrs	6 to 20 Yrs	
	PROJECTS					
HS 1	Revise and republish the Sabin Neighborhood brochure.			X		SCA, PPL
	PROGRAMS					
HS 2	Hold Community Pride celebrations with awards for youth involvement.			X		SCA
HS 3	Conduct neighborhood walking tours for youth to create awareness of Sabin's history and architecture with an emphasis on preserving and respecting the community.			X		SCA
HS 4	Provide information and referral services within the Sabin community on social services, educational opportunities and other available community resources.			X		SCA, NEC, PCC, PSU, PPS, MC
HS 5	Expand the use of Sabin School for extended childcare, recreational programs, and as a community resource center for residents of Sabin.			X		PPS, SCA
HS 6	Designate Sabin School as a "Community School" with a full time community school coordinator. Create free indoor play areas with adult supervision at Sabin School as part of the Community School program.			X		PARKS, SS, SCA
HS 7	Support Sabin School in their pursuit of increased funds for the educational programs.		X			SCA
HS 8	Design and implement activities that support and celebrate the racial, ethnic minority, generational, and other diversity within Sabin.		X			SCA, ONA
HS 9	Increase the number of block homes in Sabin. Recruit volunteers and publicize the locations of these homes to children.			X		PPS, SCA, PPB
HS 10	Provide opportunities for multi-cultural training to residents of the Sabin community.			X		SCA, ONA, NEC
HS 11	Establish a neighborhood mediation group within Sabin. Provide training and back-up support for this group.			X		SCA, ONA
HS 12	Develop programs that use the skills and talents of Sabin's older residents to teach youth.			X		PPS, SCA, MC

#	Actions	Timeline				Implementors /Advocates
		Adopted With Plan	On-Going	Next 5 Yrs	6 to 20 Yrs	
HS 13	Promote increased facilities for affordable daycare within Sabin and the establishment of childcare cooperatives.			X		SCA
HS 14	Expand supervised after-school and summer programs for youth.		X			PARKS
HS 15	Establish a minority business directory, a neighborhood skills services directory, and a skill bank or barter system program to facilitate the full use of local talents and resources.			X		SCA
HS 16	Support the development of local programs to assist those with drug and alcohol problems.			X		SCA, MC
HS 17	Establish and encourage strong "block care" organizations.			X		SCA
HS 18	Develop programs to help identify the special needs of residents and link them to appropriate services.			X		SCA
HS 19	Establish a clearinghouse (either a neighborhood contact person or NE Coalition office) to allow residents to report ongoing neighborhood concerns and to help with social service or problem referrals.			X		SCA, NEC
HS 20	Create annual Sabin "Skill Share" workdays such as paint-a-thons, etc.			X		SCA
HS 21	Support continuation and expansion of the Albina Branch Library.		X			MC, SCA
HS 22	Increase the number of family nights at school to allow parents to share in their children's school work while providing an opportunity for parents to also learn and enhance their skills.		X			PPS, SCA
HS 23	Create opportunities for families to cooperatively meet their own needs. (childcare cooperatives, food buying clubs, LETS barter system, community service days, etc.)		X			SCA
HS 24	Promote the use of Sabin School as a community resource as much as appropriate for neighborhood crafts markets, business expos, resource fairs, etc.			X		SCA
HS 25	Offer "life skills" classes on such topics as family finance, dispute mediation/conflict resolution skills, parenting skills, infant care, infant/child CPR and childhood emergency workshop			X		SCA

Note: Action Charts were approved by Portland City Council by resolution. They are a starting place. Actions with an identified implementor were adopted with the understanding that some will need to be adjusted and others replaced with more feasible proposals. Identification of an implementor for an action is an expression of interest and support with the understanding that circumstances will affect the implementation leader's ability to take action. Actions with a listed advocate rather than an implementor are included in recognition of the importance of continued discussion of these issues. Such actions will become part of this plan only when an implementor has agreed to support them.



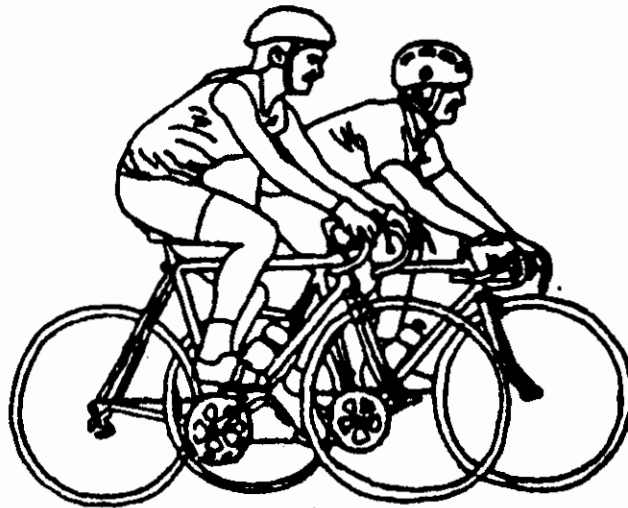
Looking North from the Intersection of Fremont and 15th.

Policy 3: Transportation

Improve access to public transportation. Make alternatives to automobile travel safer and more pleasant.

Objectives:

1. Support the construction of a light rail corridor route through Albina that will have a positive impact and which benefits the businesses and residents of the community.
2. Explore alternative forms of transportation in Sabin.
3. Increase traffic and pedestrian safety and convenience in Sabin. Develop a comprehensive plan to deal with excessive traffic speeds on neighborhood collectors (NE 15th, Prescott and Fremont) and local service streets in Sabin.
4. Develop a comprehensive bicycle route system for Sabin that connects with the city-wide bike path system. Provide education and mediation to resolve conflicts over removal of on-street parking. Provide adequate marking and signs for bike routes.



ACTION CHART: Transportation

#	Actions	Timeline				Implementors/ Advocates
		Adopted With Plan	On- Going	Next 5 Yrs	6 to 20 Yrs	
PROJECTS						
T1	Improve the safety of school crossings at NE 18th Avenue and Fremont Street and at NE 18th Avenue and Prescott Street. Consider the use of a flashing yellow crossing light and regulated pushbutton stop light at NE 18th & Fremont and NE 18th & Prescott.			X		PDOT, PPS, SCA
T2	Define entryways to Sabin by using ornamental/historical lighting standards. (15th Avenue and Fremont Street).			X		PDOT
T3	Place covered bus shelters with schedules at major stops.			X		TM
PROGRAMS						
T4	Examine ways to more equitably distribute traffic on various arterial feeders so that traffic is not heavily concentrated on 15th and Fremont.			X		PDOT
T5	Develop a comprehensive plan to deal with the traffic congestion around Sabin School.			X		PDOT
T6	Develop a comprehensive program to deal with excessive and dangerous traffic speeds on neighborhood collector (NE 15th, Prescott and Fremont) and local traffic streets. Use traffic control devices to increase pedestrian and traffic safety on neighborhood streets. Give priority to providing speed bumps or stop signs to deter cars from speeding down the hill at NE 19th and NE Mason and the unregulated intersections north of Prescott.			X		PDOT
T7	Coordinate bus routes and provide bike lanes, and bicycle storage and bike racks on buses to make easier bike/bus connections.			X		PDOT, TM
T8	Maintain the current level of bus service on the #8 and #41 as a minimum while examining the need for increased service to Sabin.		X			TM
T9	Determine the appropriate location of additional curb ramps in Sabin and ensure that Sabin is included in the annual construction of new curb ramps.			X		SCA, PDOT

Note: Action Charts were approved by Portland City Council by resolution. They are a starting place. Actions with an identified implementor were adopted with the understanding that some will need to be adjusted and others replaced with more feasible proposals. Identification of an implementor for an action is an expression of interest and support with the understanding that circumstances will affect the implementation leader's ability to take action. Actions with a listed advocate rather than an implementor are included in recognition of the importance of continued discussion of these issues. Such actions will become part of this plan only when an implementor has agreed to support them.

Policy 4: Economic Development

Develop and maintain an attractive neighborhood environment for business development and job creation that fosters neighborhood identity and relies on community resources.

Objective:

1. Welcome businesses compatible with area zoning and Sabin's character as participants of the community. Fully utilize existing commercially-zoned nodes in Sabin.
2. Assist Sabin residents in receiving training and access to desirable jobs. Provide access to job information and support services.
3. Encourage businesses locating in Sabin to hire residents of the neighborhood.
4. Encourage new businesses in scale with the Sabin neighborhood that provide goods and services to the Sabin community. Ensure the new businesses are focal points of positive identity and are responsible neighbors.
5. Foster the revitalization of Alberta Street, possibly focusing on a specific theme such as: a cultural zone with restaurants, small craft store, and neighborhood gathering places, or as a community services corridor.

ACTION CHART: Economic Development

#	Actions	Timeline				Implementors /Advocates
		Adopted With Plan	On- Going	Next 5 Yrs	6 to 20 Yrs	
	PROJECTS					
E1	Develop a Sabin community center which would include resources to assist in job search and retention.			X		SCA, PPS, NECDC
	PROGRAMS					
E2	Market Sabin to highlight its ease of access, low real estate costs, pedestrian orientation, and sense of community.			X		SCA, BA
E3	Explore the feasibility of creating a Sabin Community Development Corporation.			X		SCA, Neigh. Partnership, OCF
E4	Develop a directory of Sabin businesses and services.			X		SCA, PPL
	REGULATIONS					
E5	Maintain present neighborhood commercial zoned nodes in Sabin and encourage their full utilization.		X			BOP, PDC, SCA, PPL

Note: Action Charts were approved by Portland City Council by resolution. They are a starting place. Actions with an identified implementor were adopted with the understanding that some will need to be adjusted and others replaced with more feasible proposals. Identification of an implementor for an action is an expression of interest and support with the understanding that circumstances will affect the implementation leader's ability to take action. Actions with a listed advocate rather than an implementor are included in recognition of the importance of continued discussion of these issues. Such actions will become part of this plan only when an implementor has agreed to support them.



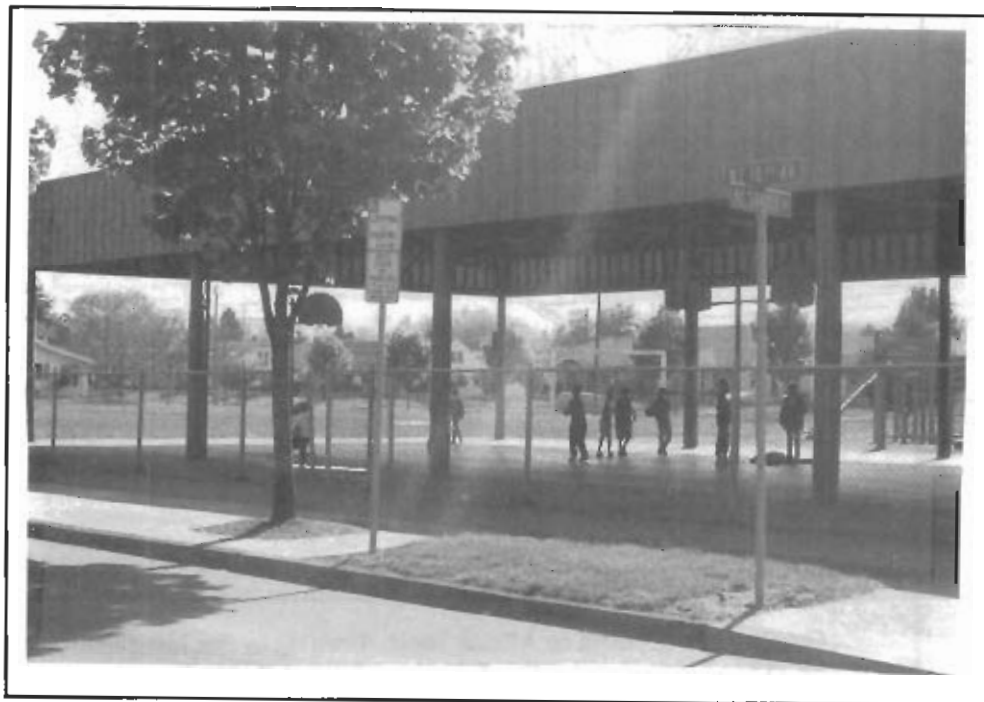
Gateway Development on Alberta Street. Drawing by Jim Longstreth for PDC. Although not within Sabin boundaries, Sabin residents are interested in the success of projects on Alberta because of their nearness to this commercial street.

Policy 5: Parks and Recreation

Enhance the livability of Sabin by providing nearby parks and affordable recreation programs. Increase the availability of recreational programs and facilities for youth. Recognize the connection between crime prevention and the availability of these programs.

Objectives:

1. Continue to provide existing parks, recreation facilities and programs that serve the Sabin community and ensure that they are well maintained and adequately staffed.
2. Increase the amount of park space, facilities and recreation programs to meet the multicultural needs of the Sabin community.
3. Involve the community in planning for future park improvements in Sabin and North/Northeast Portland.



Basketball Courts at Sabin School.

ACTION CHART: Parks & Recreation

#	Actions	Timeline				Implementors <i>/Advocates</i>
		Adopted With Plan	On- Going	Next 5 Yrs	6 to 20 Yrs	
PROJECTS						
P1	Upgrade and landscape playground on Vernon Water Tank grounds and provide a safe, attractive entrance with access from Prescott. Examine feasibility of establishing a park on the grounds.			X		WB, PARKS, SCA
P2	Improve Sabin School's south field so that sports activities can take place on an informal as well as organized basis. Work with Sabin School to upgrade the playground.			X		SCA, PPS, SS
P3	Redesign NE 15th and Prescott plaza as a mini-park with a mini-amphitheater for performing and a kiosk for display of children's art and community notices.			X		BCD, PARKS
PROGRAMS						
P4	Form a SCA standing committee to monitor current park facilities and recreation programs and advocate new facilities, staff, and programs as needed.			X		SCA
P5	Join with other interested neighborhoods to support programs and facilities in Irving Park and other parks that serve Sabin. Institute a standing park committee to work on a summer festival in Irving Park.			X		SCA
P6	Create community garden and mini-park spaces when and where there is community support and specific advocates for each project (Strawberry Hill Walkway-NE 19th and Mason; NE 15th and Prescott; SW corner of NE 12th and Skidmore).			X		Community Gardens Project, PARKS, SCA
P7	Experiment with wildflower landscaping on Strawberry Hill and walkway.			X		SCA
P8	Support recreational programs such as Little League, soccer, basketball, etc. for boys and girls. Establish community outreach to promote involvement in these programs.			X		PARKS, SCA, OSSA
P9	Support placement of a multi-cultural community center for Sabin in a rehabilitated house or commercial structure.			X		SCA, NECDC
P 10	Foster programs that enable young people to develop their skills and interests. (Recording studios; storefront computer center; kuumba (creativity) house are examples.)			X		SCA
P 11	Expand and support an annual Sabin Multicultural Celebration		X			SCA
P 12	Place a historic plaque/bench on Strawberry Hill. Establish garden along path.			X		SCA
P 13	Consider the placement of tables or benches on the north and south Sabin playgrounds.			X		SCA
P 14	Upgrade landscaping and add benches, stable garbage cans and safety signs at the Vernon water tower playground			X		SCA

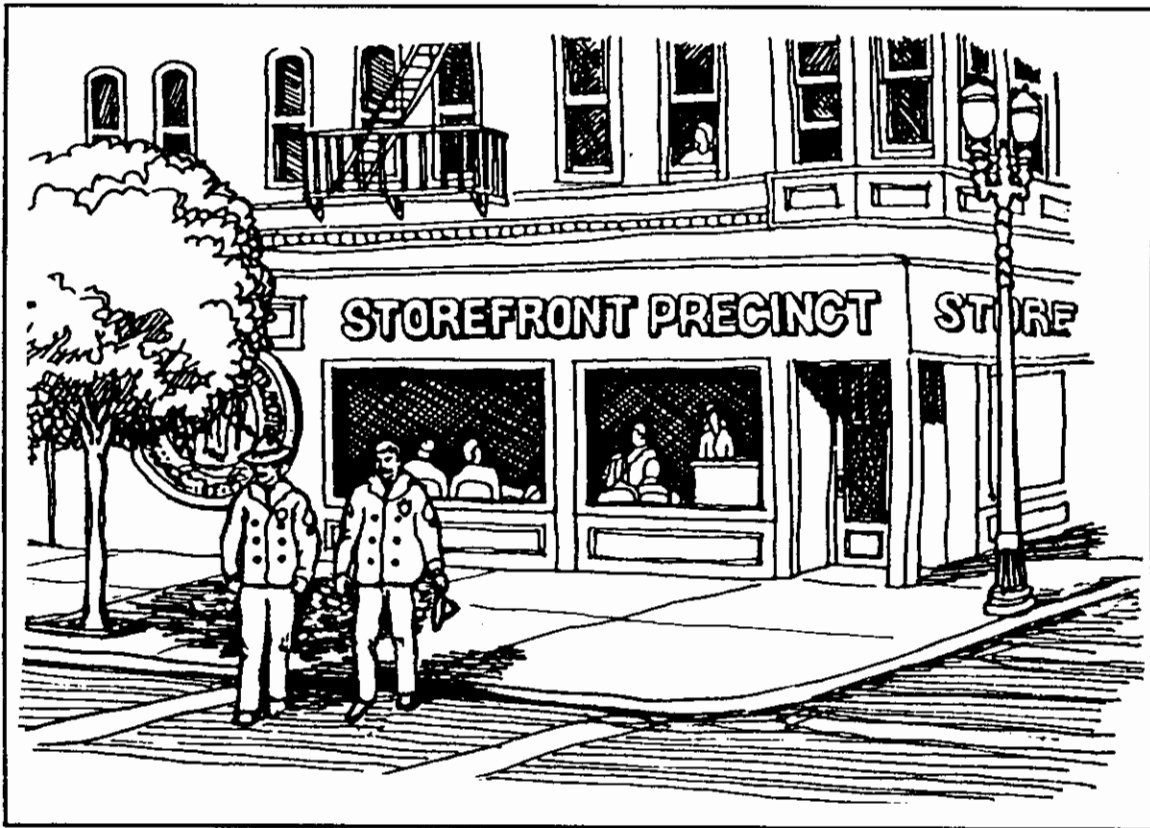
Note: Action Charts were approved by Portland City Council by resolution. They are a starting place. Actions with an identified implementor were adopted with the understanding that some will need to be adjusted and others replaced with more feasible proposals. Identification of an implementor for an action is an expression of interest and support with the understanding that circumstances will affect the implementation leader's ability to take action. Actions with a listed advocate rather than an implementor are included in recognition of the importance of continued discussion of these issues. Such actions will become part of this plan only when an implementor has agreed to support them.

Policy 6: Public Safety

Create a secure and comfortable neighborhood through crime prevention. Build a deserved reputation for Sabin and all inner Northeast Portland as a safe place.

Objectives:

1. Ensure the safety of people and property in Sabin.
2. Reduce criminal activity by focusing on prevention and early intervention.
3. Build an effective, team-oriented police/community relationship.



ACTION CHART: Public Safety

#	Actions	Timeline				Implementors /Advocates
		Adopted With Plan	On- Going	Next 5 Yrs	6 to 20 Yrs	
PROJECTS						
PS 1	Increase the lighting for Sabin School grounds and other open spaces (NE 15th and Prescott).			X		PPS, SS, PDOT
PS 2	Hold regular neighborhood clean-ups. Work to reduce litter and promote recycling and conservation.		X			SCA, BES
PROGRAMS						
PS 3	Enhance neighborhood and business block watches, Sabin United Neighbors (SUN) mobile block watch and block homes. The main purpose of the mobile block watch is to build community participation in neighborhood activities. Establish an escort service for seniors as part of the mobile block watches.		X			SCA, PVT, PPL, ONA, MC
PS 4	Provide SCA with monthly crime statistics and information on repeat problem calls so that SCA can monitor the situation and identify high crime areas in need of attention.		X			PPB, ONA
PS 5	Create mechanisms for stronger enforcement of excessive noise, unruly congregation, and firearms violations as tools for addressing gang activity.		X			PPB, BOB
PS 6	Reinforce the importance of filing police reports and developing a tracking system for problem houses so that legal cases can be built when problems arise.			X		SCA, PPB
PS 7	Continue regular meetings with designated liaisons from Community Policing and the Gang Enforcement Team.		X			SCA, PPB
PS 8	Encourage strong block organizations with a network of representatives to the Sabin Community Association.			X		SCA
PS 9	Provide proper training and support for strong, effective block watches and mobile watches. Fund programs on an ongoing basis and provide follow-up through the City of Portland.		X			SCA, PPB, ONA
PS 10	Expand mediation programs and train neighborhood residents to help Sabin neighbors solve disputes within the neighborhood.			X		SCA, ONA
PS 11	Obtain funding for crime prevention programs such as site hardening and defensible space landscaping.			X		SCA, PPB
PS 12	Support the community policing effort by the city. Foster more cooperation with and from police.		X			SCA, PPB

Note: Action Charts were approved by Portland City Council by resolution. They are a starting place. Actions with an identified implementor were adopted with the understanding that some will need to be adjusted and others replaced with more feasible proposals. Identification of an implementor for an action is an expression of interest and support with the understanding that circumstances will affect the implementation leader's ability to take action. Actions with a listed advocate rather than an implementor are included in recognition of the importance of continued discussion of these issues. Such actions will become part of this plan only when an implementor has agreed to support them.

ABBREVIATIONS

AIA - American Institute of Architects
BA - North/Northeast Business Association
BCD - Bureau of Community Development
BES - Bureau of Environmental Services
BOB - Bureau of Buildings
BOP - Bureau of Planning
FOT - Friends of Trees
GEN - Northeast Genesis
I&R Agency - Information & Referral
MC - Multnomah County
NEC - Northeast Coalition of Neighborhoods
NECDC - Northeast Community Development Corporation
NM - Neighborhood Mediation
OCF - Oregon Community Foundation
ONA - Office of Neighborhood Associations
OSSA - Oregon State Soccer Association
PCC - Portland Community College
PDC - Portland Development Commission
PDOT - Portland Department of Transportation
PARKS - Parks
PPB - Portland Police Bureau
PPL - Pacific Power & Light
PPS - Portland Public Schools
PVT - Private
PSU - Portland State University
SCA - Sabin Community Association
SCDC - Sabin Community Development Corporation
SLT - Sabin Land Trust
SS - Sabin School
TM - Tri-Met
WB - Water Bureau